



# A World-class Hub Port

## Strengths of Hong Kong Port

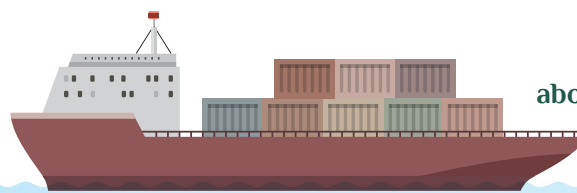


### Natural deep-water harbour

- With a depth of 17 metres, Hong Kong Port can accommodate ultra large container vessels at all tides, allowing vessels to navigate safely and easily in the harbour.
- In 2016, Hong Kong Port received about 99 000 cargo vessels and about 86 000 passenger vessels.

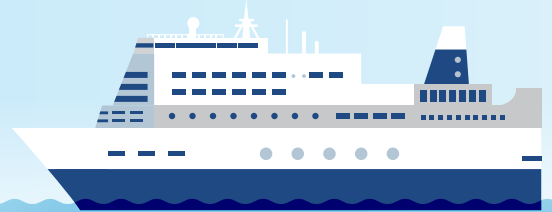
HONG KONG  
PORT

17  
metres deep



about **99 000**  
cargo vessels

about **86 000**  
passenger vessels



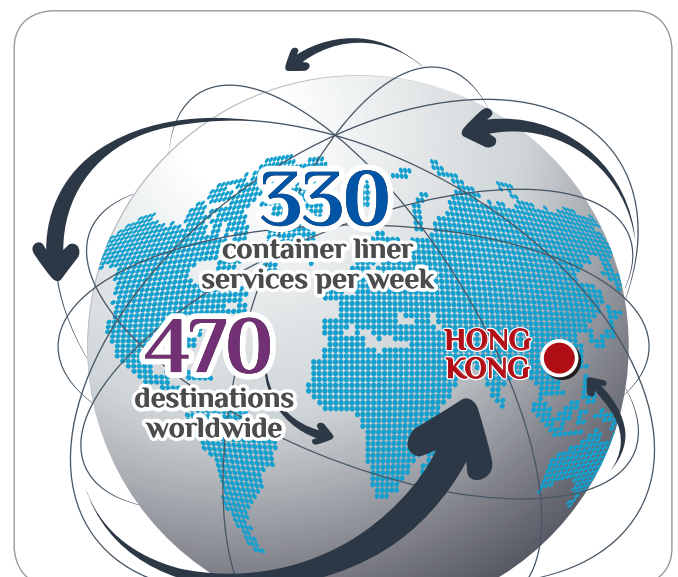
### Strategic location

- Situated on the Far East trade routes at the centre of the fast-developing Asia-Pacific Basin, Hong Kong Port is a preferred hub port in the region.
- As one of the busiest ports in the world, Hong Kong Port has the capacity to handle some 67 000 twenty-foot equivalent units (TEUs) of containers on average per day. In 2016, it handled nearly 20 million TEUs.



### Superb connectivity

- Located at the gateway of South China, Hong Kong Port attracts a large number of cargos to and from South China by land or river every day.
- Frequent and comprehensive liner shipping services with about 330 container liner services per week connect to around 470 destinations worldwide.
- China's Belt and Road Initiative covers some 60 countries. Hong Kong Port has cargo movements to and from about 45 of them.



## Well-established port infrastructure

- Hong Kong Port comprises the **Kwai Tsing Container Terminals** with nine terminals run by five experienced private-sector operators and a variety of cargo handling facilities, including the River Trade Terminal, anchorages and other private berths.

## Kwai Tsing Container Terminals

Kwai Tsing Container Terminals are financed, owned and operated by the private sector, providing non-stop services 24 hours a day, 7 days a week.

The five terminal operators are:



Hongkong International Terminals Limited (HIT)



Modern Terminals Limited (MTL)



中遠-國際貨櫃碼頭(香港)有限公司  
COSCO-HIT Terminals (Hong Kong) Ltd.

COSCO-HIT Terminals (Hong Kong) Limited (COSCO-HIT)



Asia Container Terminals Limited (ACT)



DP WORLD Goodman DP World

## A World-class Hub Port

Being profit-driven entities, the terminal operators frequently upgrade their equipment and systems to enhance efficiency, thus keeping them at the forefront of the industry and enabling them to meet growing demands. Environmentally-minded, Hong Kong's operators also attach priority to pursuing green initiatives. Examples include gantry cranes driven by shore electricity and hybrid machines.

### FACTS AND FIGURES

- Container terminals: 9
- Container berths: 24
- Quay length (m): 7 694
- Quay cranes: 99
- Yard area (ha): 279
- Water depth (m): 17
- Handling capacity (million TEUs): over 20
- 2016 container throughput (million TEUs): 15.2
- Percentage share to Hong Kong Port's container throughput in 2016:
  - Kwai Tsing Container Terminals: 77%
  - Other port facilities: 23%

